

Finishing the construction phase in an EPC (Engineering, Procurement, and Construction) project for plastic recycling plant involves several key steps. This phase marks the final stretch of bringing the project to operational status. Here's a guide to successfully completing this stage:

**Completion of Construction Activities:**

Ensure that all construction-related activities, including the assembly and installation of the plastic recycling plant, are completed.

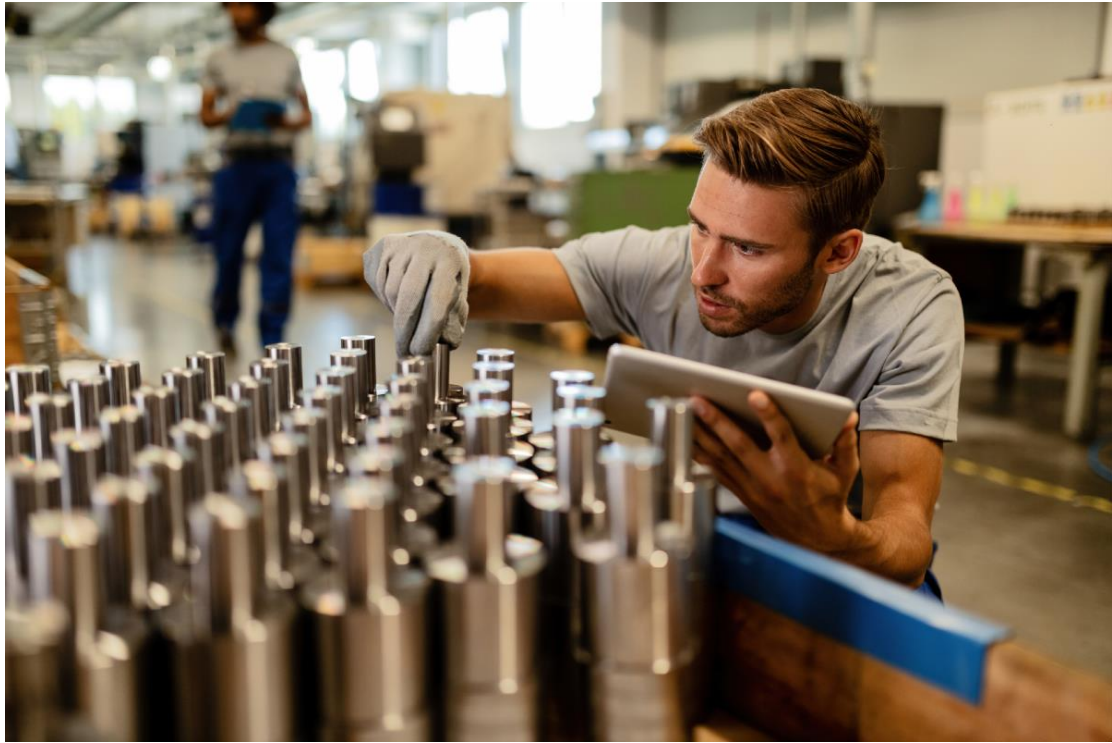
Check for any pending work or finishing touches that need to be addressed.



**Quality Assurance and Inspection:**

Conduct thorough inspections to ensure that all parts of the machine and associated infrastructure meet the design specifications and quality standards.

Resolve any identified issues or discrepancies from the initial design.



**Safety Checks:**

Implement rigorous safety checks. This includes verifying that all safety features of the machine are installed and functional.

Ensure the facility complies with all relevant safety standards and regulations.



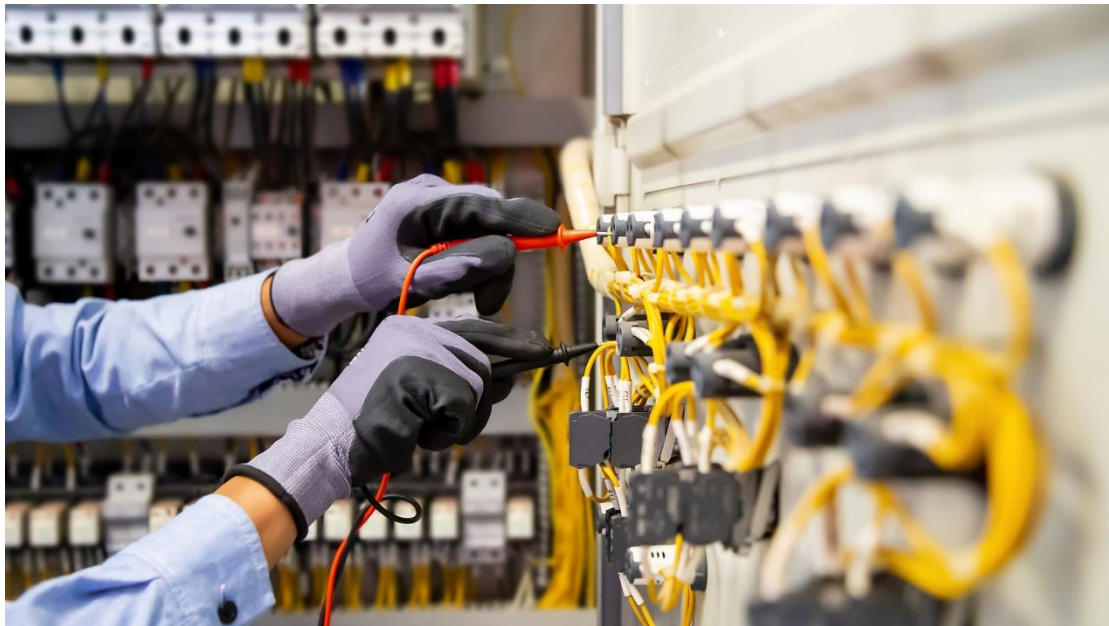
**Testing and Commissioning:**

Perform a series of tests on the recycling machine to ensure it operates as intended. This might

include dry runs, load tests, and operational tests.

Address any technical issues that arise during testing.

Once testing is satisfactory, the machine can be officially commissioned for use.



**Training of Personnel:**

Conduct training sessions for operators and maintenance staff. Training should cover the operation of the machine, safety procedures, troubleshooting, and routine maintenance.

Ensure that all relevant personnel are comfortable and competent in their roles.

**Documentation and Handover:**

Compile and hand over all necessary documentation to the client. This should include operating manuals, maintenance guides, safety protocols, and warranty information.

Provide detailed records of the construction process, including any changes made to the original plans.



**Final Walk-Through with Client:**

Conduct a final walk-through of the project with the client. This allows the client to see the completed project and ask any final questions.

Address any concerns the client may have and ensure they are satisfied with the work.



**Obtaining Final Approvals:**

Secure any final approvals or certifications needed from local authorities or regulatory bodies.

Ensure compliance with all legal and environmental regulations.

**Post-Construction Support:**

Offer post-construction support services, which may include maintenance, technical support, or operational assistance during the initial period post-commissioning.

Establish a point of contact for the client for any future queries or issues.



**Project Close-Out:**

Officially close out the project by settling all accounts and contractual obligations.

Conduct an internal project review to evaluate the successes and challenges of the project, capturing lessons learned for future projects.



By following these steps, the EPC contractor ensures that the construction phase of the plastic recycling plant is completed efficiently, safely, and to the satisfaction of the client, thereby paving the way for the operational phase of the project.